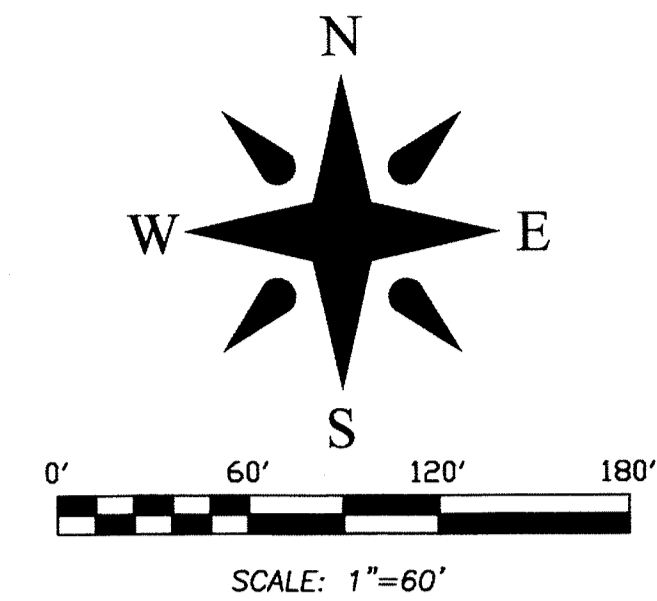


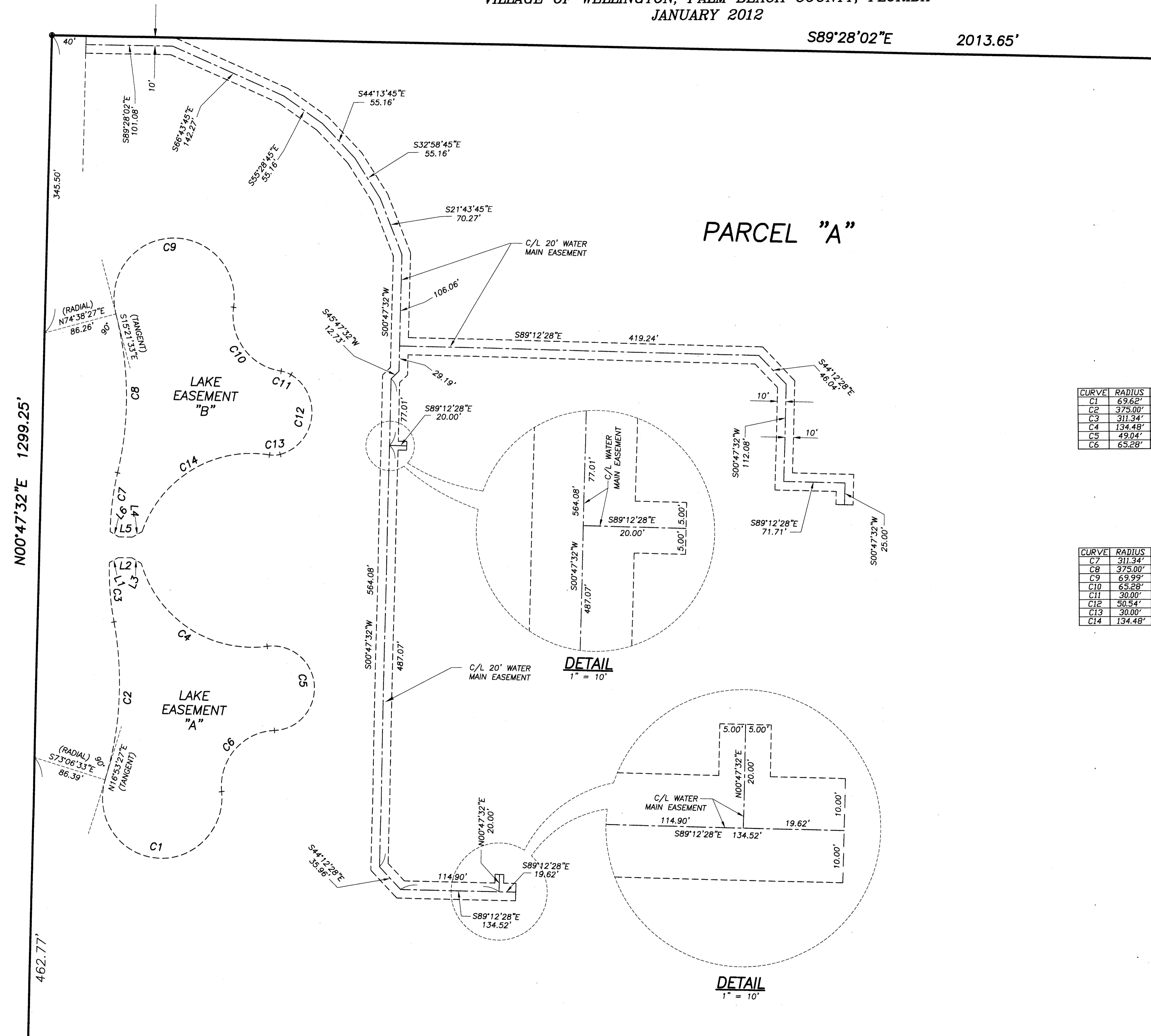
Tonkawa Farms

LYING IN SECTION 29, TOWNSHIP 44 SOUTH, RANGE 41 EAST,
VILLAGE OF WELLINGTON, PALM BEACH COUNTY, FLORIDA
JANUARY 2012



71

SHEET 3 OF 3



LAKE EASEMENT "A"

CURVE	RADIUS	ARC LENGTH	CHORD LENGTH	CHORD BEARING	DELTA ANGLE	TANGENT
C1	69.62'	247.20'	136.35'	S 84°49'33" E	203°26'01"	335.70'
C2	375.00'	185.16'	183.29'	N 02°44'44" E	28°17'26"	94.51'
C3	311.34'	69.41'	69.26'	S 05°00'48" E	12°46'22"	34.85'
C4	134.48'	191.23'	175.52'	S 57°32'50" E	81°28'42"	115.83'
C5	49.04'	158.75'	97.97'	N 05°32'57" W	185°28'29"	1025.72'
C6	65.28'	105.77'	94.57'	S 40°46'10" W	92°50'16"	68.59'

LINE	BEARING	DISTANCE
L1	N 61°50'51" E	11.76'
L2	S 88°09'09" E	16.00'
L3	S 58°09'09" E	12.77'

LAKE EASEMENT "B"

CURVE	RADIUS	ARC LENGTH	CHORD LENGTH	CHORD BEARING	DELTA ANGLE	TANGENT
C7	311.34'	68.33'	68.20'	S 06°39'28" W	12°34'32"	34.30'
C8	375.00'	185.25'	183.37'	N 01°12'24" W	28°18'16"	94.56'
C9	69.99'	248.14'	137.13'	S 86°12'49" W	203°08'43"	341.78'
C10	65.28'	103.05'	92.68'	S 37°50'12" E	90°27'11"	65.79'
C11	30.00'	12.20'	12.11'	S 71°25'03" E	23°17'29"	6.18'
C12	50.54'	118.04'	92.98'	S 07°08'01" W	133°48'38"	118.52'
C13	30.00'	12.87'	12.77'	S 86°19'40" W	24°34'41"	6.54'
C14	134.48'	187.69'	172.82'	S 58°38'02" W	79°57'58"	112.77'

LINE	BEARING	DISTANCE
L4	N 61°50'51" E	12.90'
L5	S 88°09'09" E	16.00'
L6	S 58°09'09" E	11.74'

PLAT OF

Tonkawa Farms

WALLACE SURVYNTS
CORP., LICENSED BUSINESS # 4889
5933 VILLAGE BOULEVARD, WEST PALM BEACH, FLORIDA 33407 • (561) 640-4551

FIELD:	JOB No.: 11-1147.8	F.B. PG.
OFFICE: R.C.	DATE: JANUARY 2011	DWG. No.: 11-1147-6
C/K'D:	REF.: 94-1155-14.DWG	SHEET 3 OF 3